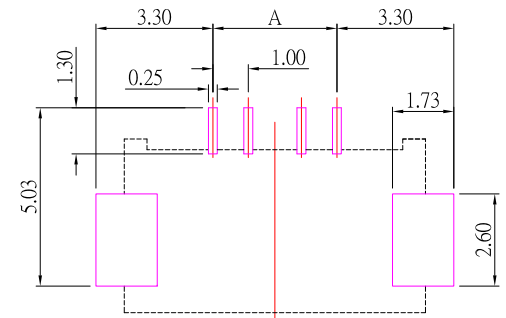
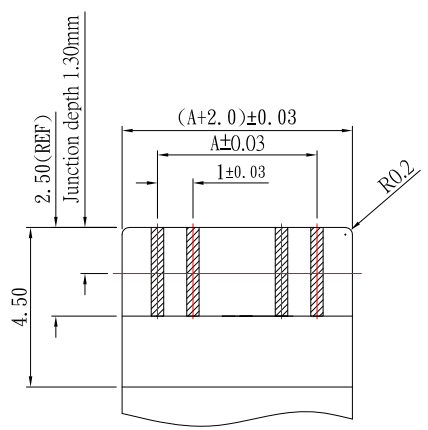
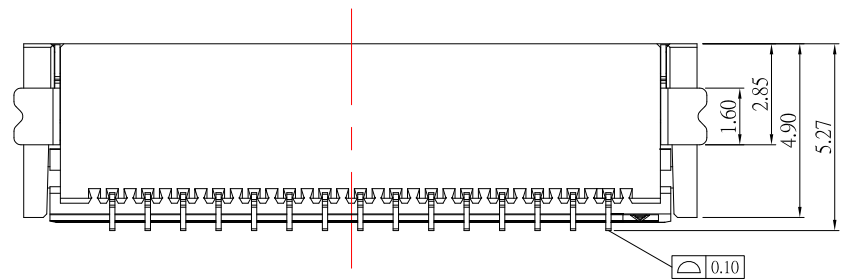
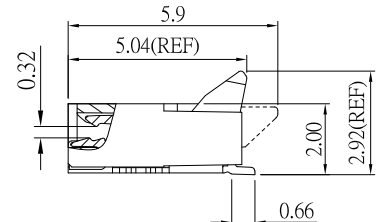
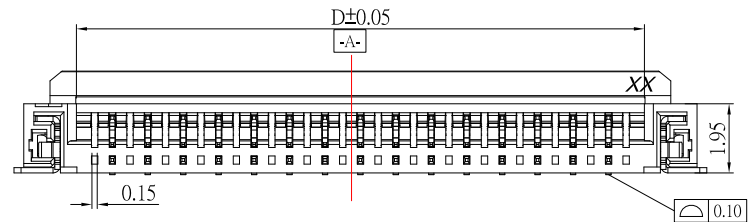


No. DIM POSITIONS	A	B	C	D
4	3.00	8.00	8.55	5.05
5	4.00	9.00	9.55	6.05
6	5.00	10.00	10.55	7.05
7	6.00	11.00	11.55	8.05
8	7.00	12.00	12.55	9.05
10	9.00	14.00	14.55	11.05
12	11.00	16.00	16.55	13.05
15	14.00	19.00	19.55	16.05
22	21.00	26.00	26.55	23.05



RECOMMENDED PCB LAYOUT



RECOMMENDED FFC/FPC
T=0.30^{+0.02}_{-0.01}

SPECIFICATIONS

Electrical Characteristics:

- 1.1 Rating: 0.5 A, 50V(AC/DC)
- 1.2 Temperature range: -40°C~+85°C
- 1.3 Withstand Voltage: 250V AC
- 1.4 Contact Resistance: 30mΩ MAX
- 1.5 Insulation resistance: 500 MΩ MIN

Material:

- 1.1 Housing: LCP,Natural
- 1.2 Cover: LCP,Black
- 1.3 Contact: Phosphor Bronze, Au Plated over Nickel
- 1.4 Stator: Brass,Tin Plated over Nickel

7	更新Contact鍍層	Jack	042525
6	更新FFC Cable 尺寸	Jack	092624
5	新增FFC Cable 厚度	Jack	091924
4	更新材質	Jack	083121
3	更新圖面	Jack	070320
2	更新PCB LAYOUT尺寸	Jack	100819
1	更新尺寸標示	Jack	092618
ITEM NO.	DESCRIPTION	DRAWN	DATE



TOLERANCE UNLESS OTHERWISE STATED:

Up to 5	±0.2
Above 5 ~ 15	±0.3
Above 15 ~ 30	±0.4
Above 30 ~ 50	±0.5
Angle	±0.3°

3RD. ANGEL'S

DRAWN BY:	DATE	MAT'L	TITLE	CONNECTOR
Jack Lu	04/25/25	FINISH	MODLE	1.0 FPC 雙接90度 SMT 後掀蓋
CHECKED BY:	DATE	SCALE	DWG NO.	FPC10D-20xx-C-S304
Jacky Chen	04/25/25	1 : 1	PART NO.	FPC10D-20xx-C-S304
APPROVED BY:	DATE	SHEET NO.	1 of 1	
Tony Kao	04/25/25			

SIZE	A4
VER	R7